

# 2022 Annual Report



# AKĪ WĪDJIGADE

Osgoode Odena Kete Mawadjichigan Mīgiwam  
dibadjimochigade e daniziyeg o'oma Algonquin Anike  
Anishinabeg odakīmiwa. Algonquin Anshinabeg ojida iji  
debendagoziwag o'o akī kā iji mi Ottawa, Rideau and Castor  
Zibiwagan ashidj dash kaye kī iji babā dajikewag ashidj  
bimādiziwag mane anike midasomidana taso bibōn. Enabigis  
wīdjiwishinan gidji gichi inwendameg odōdenamiwa, weshkadj  
ashidj nōngom gichi ayāg, kaye dash nīgān anike ayāg.

## LAND ACKNOWLEDGEMENT

The Osgoode Township Museum acknowledges that we are on  
the unceded ancestral territory of the Algonquin Anishinaabeg.

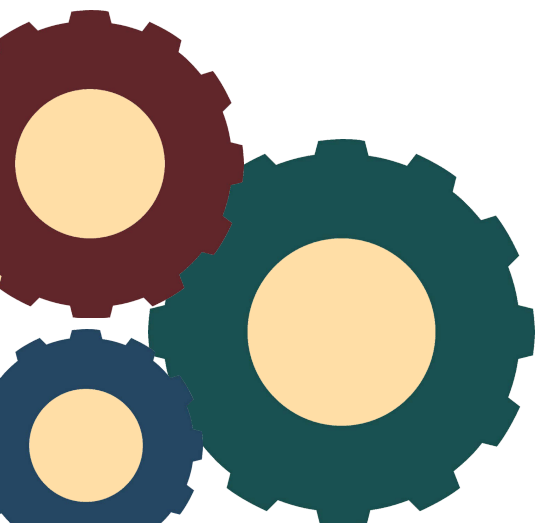
Algonquin Anishinaabeg are the original inhabitants of this  
territory along the Ottawa, Rideau and Castor Rivers and have  
lived and moved through this place over hundreds of  
generations. Please join us in honouring their communities,  
their elders past and present, as well as future generations.

## RECONNAISSANCE TERRITORIALE

Le Musée rural du canton d'Osgoode reconnaît être situé sur  
un territoire ancestral non cédé du peuple algonquin. Les  
Algonquins sont les premiers habitants de ce territoire situé  
le long des rivières Outaouais, Rideau et Castor et ont vécu et  
voyagé sur ces terres pendant des centaines de générations.  
Joignez-vous à nous pour honorer leurs communautés, leurs  
aînés d'hier et d'aujourd'hui, ainsi que les générations futures.

# TABLE OF CONTENTS

<b>4</b>	YEAR IN REVIEW
<b>5</b>	ABOUT THE MUSEUM
<b>6</b>	2022 AT A GLANCE
<b>7</b>	PROGRAMS & EVENTS
<b>8</b>	EXHIBITIONS
<b>9</b>	COLLECTIONS & RESEARCH
<b>10</b>	ONLINE ENGAGEMENT
<b>11</b>	ABOUT THE MUSEUM
<b>12</b>	STAFF & BOARD
<b>13</b>	SUPPORTERS & PARTNERS



# YEAR IN REVIEW

The Osgoode Township Museum has been closed more than it has been open since March 2020 thanks to the COVID-19 pandemic. The museum continued virtual engagement and take-home programming as 2022 started.

A major transition occurred in March, as the museum said 'goodbye' to Jill Jordan, who had served as Executive Director since 2018. Jill led the museum through trying times, and left the organization stronger for her efforts.

By the spring there was hope that the museum might soon be able to reopen and stay open. During April and May, museum staff worked towards reopening to the public. This included work with the collection, reorganizing and tidying much of the museum building, and other updates. The museum reopened the weekend of June 4th and 5th, in tandem with Doors Open Ottawa. Over 75 visitors over the two days.

OTM returned to regular hours of operation for the summer, and welcomed visitors from the local community and beyond. This included a slate of in-person events for the first time in two years. School and other groups also resumed visiting. Staff were also able to participate in several off-site events as well.

Before, and since, reopening the museum and staff have been busy! Notable achievements include:

- Collection RE-ORG
- New road signage on Bank Street and the museum building
- Museum lobby and entry redesigned to make the museum more welcoming
- Inaugural Community Gallery exhibit
- Larry Robinson exhibit opened
- Pop-up Markets initiated
- Harvest Fest resumed in person
- "Osgoode's Objects" video series launched
- Gazebo and sensory garden completed after permitting delays

As a successful 2022 comes to a close, challenges remain to be tackled in 2023 and beyond:

- Balancing in-person and online initiatives with available resources
- Working with limited indoor, climate-controlled space
- Revenue diversification

With the guidance of the museum Board, the staff and volunteers of the Osgoode Township Museum will meet these head on with creative and effective solutions.

# ABOUT THE MUSEUM

## VISION

We foster a sense of community identity by inspiring curiosity about our shared rural life, past, present and future.

## MISSION

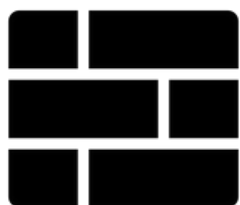
For residents of, and visitors to, the Nation's Capital, the Osgoode Township Rural Museum tells the story of the people and heritage of Osgoode Township and surrounding communities to exemplify the role that rural heritage has in the life of our city.

## MANDATE

The Osgoode Township Rural Museum's mandate is to collect, preserve, display, study, interpret and make accessible the material and cultural heritage of the Osgoode Township as a means to further the understanding of the former Osgoode Township's significance to the greater Ottawa community as an example of rural and agricultural life.

# 2022 AT A GLANCE

**1591**



Museum visitors

**3114**



Total users

**9, 543**



Website visitors

**9**



Online programs

**26**



Volunteers

**731**



Volunteer hours

**\$6, 533**

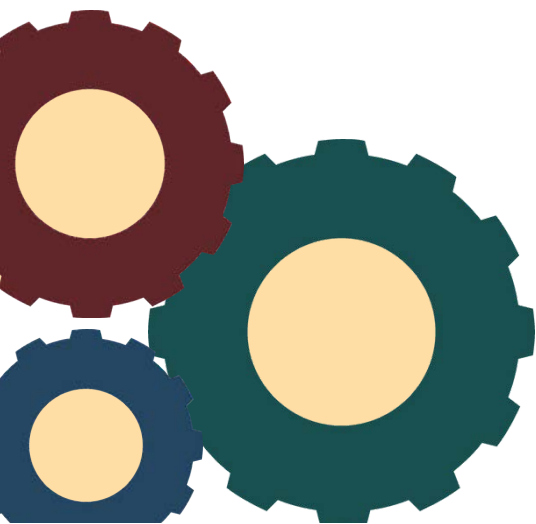


Donations

**\$198, 302**



Grant funding





# PROGRAMS & EVENTS

## Camp Kits

The museum's camp-kits became a popular way for children to enjoy museum activities safely at home. The Barnyard Fun Box continued that success.

## Educational Programming

Progress was made in welcoming back groups of students and other community groups in person.

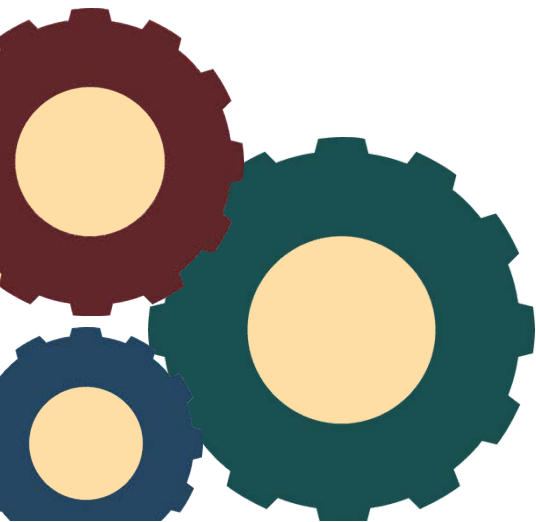
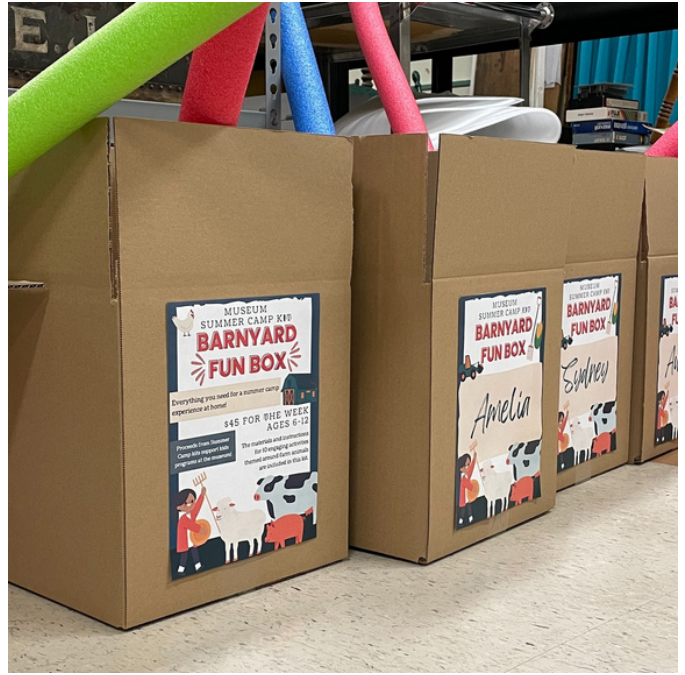
## Outreach

Staff attended several outreach activities in Edwardian costume, including the International Plowing Match (in Kemptville) as well as the Metcalfe Fair.

## Special Events

This summer, Pop-Up Markets began at the museum to showcase local producers, makers and growers. Three markets were held in June, July, and August.

Harvest Festival was hosted in-person for the first time since 2019. The museum continued to offer Harvest Bushel Baskets introduced during the virtual Harvest Fests of 2020 and 2021. The baskets included local produce (some from the museum's Heritage Garden), local artisan products, and more.



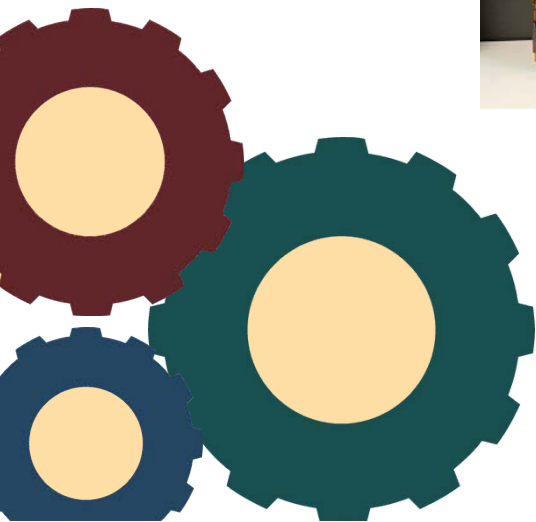


# EXHIBITIONS

The *Larry Robinson: Hometown Hero to Hockey Legend* exhibit opening at the Metcalfe Arena in June was highly anticipated, and well attended. Larry Robinson himself unveiled the display, and generously spent two hours meeting fans, signing autographs, and posing for photos. This off-site exhibit was a partnership with the City of Ottawa Archives and City of Ottawa Facilities. Larry Robinson is from Osgoode Township and he continues to inspire young hockey players with his achievements.

The first exhibit in OTM's *Community Gallery* featured Osgoode Township-raised glass artist Shannon Hope. OTM is engaging with community groups for 2023's second Community Gallery exhibit.

The museum assisted the Metcalfe Community Association and local Legions with the Metcalfe Military Banners Project. The project memorializes individuals involved in the military, living or deceased, who lived in, or has strong connections to Osgoode Ward, Ontario. The museum provided research and images for several banners that were sponsored by local schools and community groups.





# COLLECTIONS & RESEARCH

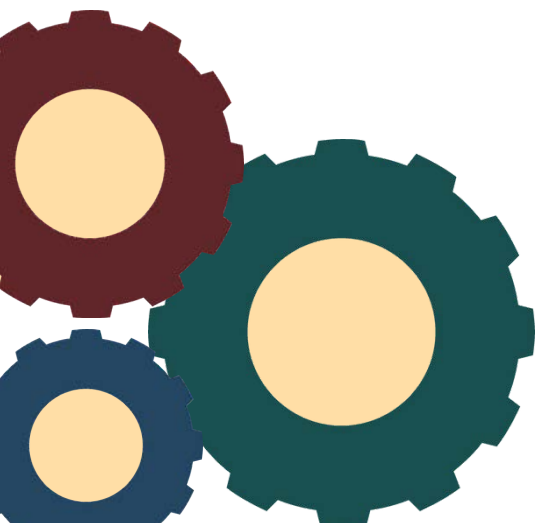
During May, the museum undertook a Re-Org project. The Re-Org Method is process developed by the International Centre for the Study of the Preservation and Restoration of Cultural Property. This project made the artefacts within the collection more accessible as well as creating space for growth.

In 2022, OTM accepted fewer object donations than in 2021. In fact, much of the year was spent considering objects to remove from the collection. The Osgoode Township Museum Artifact Assessment Committee reviewed over 200 objects for potential deaccession.

Staff continued to update the museum's MINISIS database and sit on the Ottawa Museums and Archives Collection committee. The Museum's collection is currently numbered at 11, 059 artefacts.

In 2022, 31 research requests were received. These came from local villages, and as far afield as Toronto, Manitoba, Calgary, Vancouver, and Utah. Requests included photography; genealogy services; deed, mortgage and tax roll searches; general genealogy; and built heritage research

Staff continued with the Osgoode Township cemetery index project. Research also supported social media engagement.





# ONLINE ENGAGEMENT

## Osgoode's Objects

Staff launched an online video series entitled "Osgoode's Objects" on TikTok. These short videos feature artefacts from the collection and their present-day connections to the community. These engaging videos have found an audience that has grown rapidly.

## Virtual Programs

Staff delivered virtual programs to both the public and youth groups. OTM offered new virtual talks this year, highlighting the Farmerettes, as well as LGBTQ2+ farmers and homesteaders in Ontario. These programs were made available on YouTube, increasing their reach and longevity.

## Seniors Programs

The virtual Retro-Spectives program continued with the Dementia Society of Ottawa and Renfrew County on a quarterly basis.

## Social Media

The museum continued to increase its online presence.

**1573**



Up from  
1442

**737**

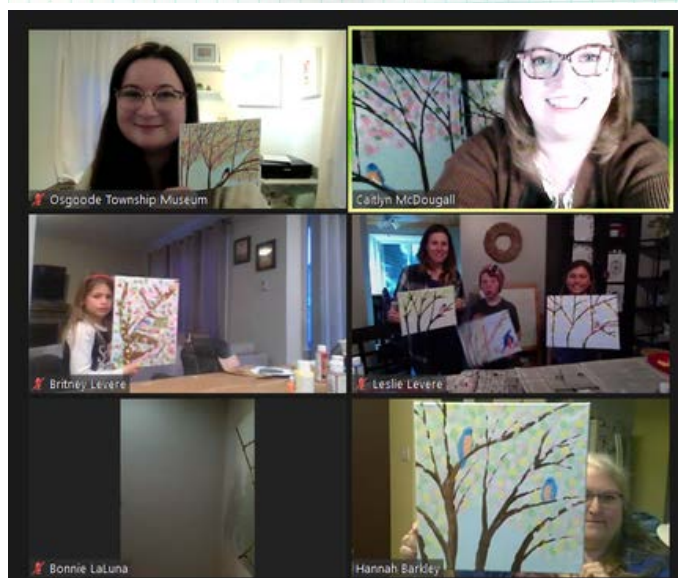
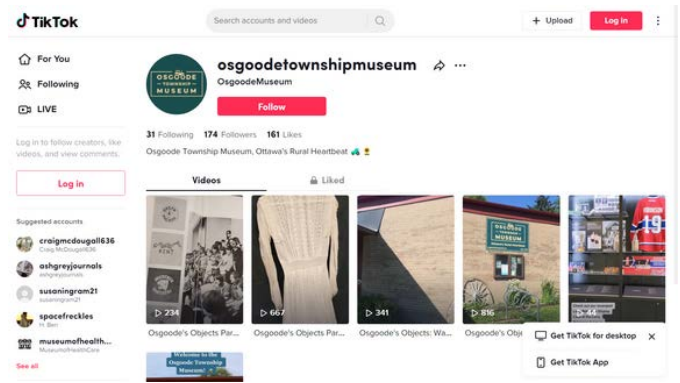


Up from  
694

**201**



Up from  
26





# MUSEUM SITE

## Heritage Garden

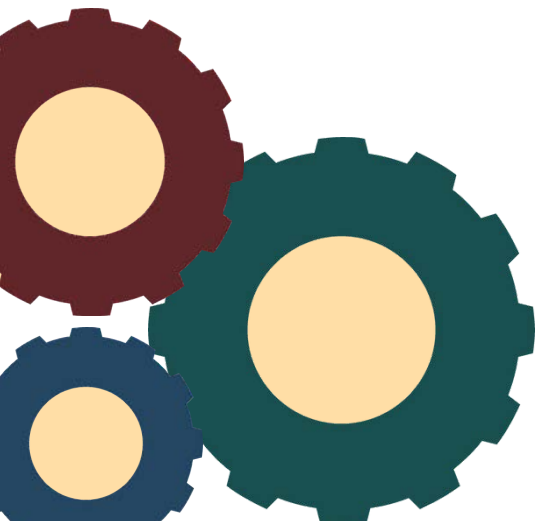
The Heritage Garden had a successful season thanks to the hard work and dedication of OTM's wonderful volunteers. A welcome upgrade this year was the refreshing of the stone dust paths throughout the garden thanks to R. Sugrue Cartage. The garden produced a good harvest of vegetables for local residents and our fundraising Harvest Baskets.

## Gazebo

OTM's long-awaited gazebo finally arrived in November! Initiated in 2020 this project will provide a dementia-friendly, accessible garden space behind the museum away from the hustle and bustle of Bank Street. It will have raised beds and plenty of room to rest in the shade. In the spring of 2023, a variety of sensory plants will be planted and the garden space will be used for the programs for seniors living with dementia.

## Je vis en campagne / I live in the country

MASC - Multicultural Arts for Schools and Communities - organized a visit to OTM by bilingual students in early June. The students took photos throughout the museum site, seeking connections to rural life. During the summer, a second group of students wrote poems inspired by the images. The museum was pleased to be asked to host the installation of large-scale graphic panels integrating the photographs and poetry.



# STAFF & BOARD

## Staff

Jillian Jordan – Executive Director (Sept 2018 – March 2022)

James Jensen – Executive Director (effective April 2022)

Ann Robinson – Exhibit and Administrative Officer

Caitlyn MacDougall – Education Officer

Patrick Chisholm – Collections Officer (Aug 2020 – Feb 2022)

Ashley Cuthbert – Collections Officer (effective Feb 2022)

Melanie Lefebvre – Collections Assistant, Summer Student (YCW)

Katherine Haslam – Programming Assistant, Summer Student (CSJ)

## Board of Directors

### President

Doug Thompson

### Past President

Carolle Dallas-Arbuckle

### Secretary-Treasurer

Cheryl Sullivan

### Directors at Large

Tracey D'Aviero

Casey Gray

Helen Porteous

Carley Scharf

Jennifer Thiverge



# SUPPORTERS & PARTNERS

Thank you to those individuals and organizations who have graciously contributed funding; volunteered time and expertise; donated or loaned artefacts and supplies; or shared our news locally.

A. Raymond & Sons Enterprises  
Acculines & Signs  
Axle Automotive  
Boyd Bros Concrete Products  
Brenda Cumming  
Camm Heavy Machinery Movers  
Carleton Mushroom  
Carley Scharf  
Carolle Dallas-Arbuckle  
Casey Gray  
Cheryl Sullivan  
Concrete Garden Supply  
Cooper Physiotherapy Clinic  
Craig McDougall  
Daley Family Funeral Home  
Darcy Porteous  
Dementia Society of Ottawa-Renfrew  
Doris Prescott  
Doug Thompson  
Emerald Links Golf & Country Club  
Foodland Greely  
George Darouze, Councillor  
Greely Lions Club  
Greely Sand and Gravel  
Guy Fuels  
Helen Porteous  
Ironworkers Local 765  
Jennifer Mohring  
Jennifer Thivierge  
Joseph Princiotta  
Keith Porteous  
Lawrence Jordan  
Mama B's Pure Honey  
Melissa Sienkiewicz  
Metcalf Golf Club  
Michael Daley  
Michelle Simard  
Moe Robinson  
Mont-Bleu Ford

O'Farrell Financial Services - Sarah Chisholm  
Ottawa Amitabha Buddhist Temple  
Ottawa Community Foundation  
Patti Mitton  
R Sugrue Cartage  
Red Dot Café  
Russ Keenan Enterprises  
Sarah Cooper Godoy  
Shroomfest  
Stanley's Olde Maple Lane Farm  
Sue Hill  
The Family Ball Tournament  
The Mortgage Advisors - Marley MacDonald-Plante  
Tony D'Aviero  
Tracey D'Aviero  
Vernon Community Association  
Vernon Valley Farms  
Wallace Service Centre

## 2022 Grants

- Cultural Service Agreements Program; City of Ottawa
- Museum Assistance Program (Reopening Fund for Heritage Organizations); Canadian Heritage
- Translation and Innovation Grant; Ottawa Museum Network
- Young Canada Works; Canadian Museums Association
- Canada Summer Jobs; Employment and Social Development Canada
- Heritage Organization Development Grant; Ontario Ministry of Heritage, Sport, Tourism and Culture Industries